



Alex Mustakas • Artistic Director

# KING'S WHARF THEATRE

## RENTAL INFORMATION PACKAGE



97 Jury Dr., Penetanguishene, ON, L9M 1G7

Box Office: 705-549-5555

Toll Free: 1-855-372-9866

[kingswharftheatre.com](http://kingswharftheatre.com)

For space availability, rental estimates, reservations, technical specifications and further information on fees and schedules, please contact: **Karen De Iuliis**, Groups, Events and Rentals Manager 519-621-5511 ext. 246. [karend@draytonentertainment.com](mailto:karend@draytonentertainment.com)

# KING'S WHARF THEATRE

## ABOUT

Nestled within Discovery Harbour, King's Wharf Theatre is flanked by majestic tall ships and historic buildings. This unique, rustic theatre is air-conditioned and wheelchair accessible. A wonderful getaway for your lectures, theatrical events, recitals, concerts, and so much more. We have professional staff on hand to ensure all your production requirements are met and your event is a success.

## THEATRE INFORMATION

House capacity: 364 seats, plus two wheelchair positions

The King's Wharf Theatre is wheelchair accessible. Seating is stadium-style. The box office, restrooms and refreshment area are all located on the main level.

## SPECIFICATIONS

Total width: 48'6"  
Height to Grid: 16'6"  
Depth of the stage: 28'

Grid pipes are located at 1ft centres. The stage is an open box type with the ability to place soft masking to provide wing space as required. There are loading doors in the stage left wall that allow access directly to the stage. Access to the dressing rooms is via a door in the centre of the upstage wall of the stage.

Four dressing rooms are available, accommodating up to twenty-six people.

## TECHNICAL INFORMATION

A basic lighting plot is provided with your rental which will be hung and circuited prior to your arrival.

Our in-house sound system, which includes a basic sound system including main speakers, onstage monitors and console, is suitable for theatrical and dance presentations. The theatre can also make arrangements for rental of microphones. A professional sound operator is required at an additional charge.

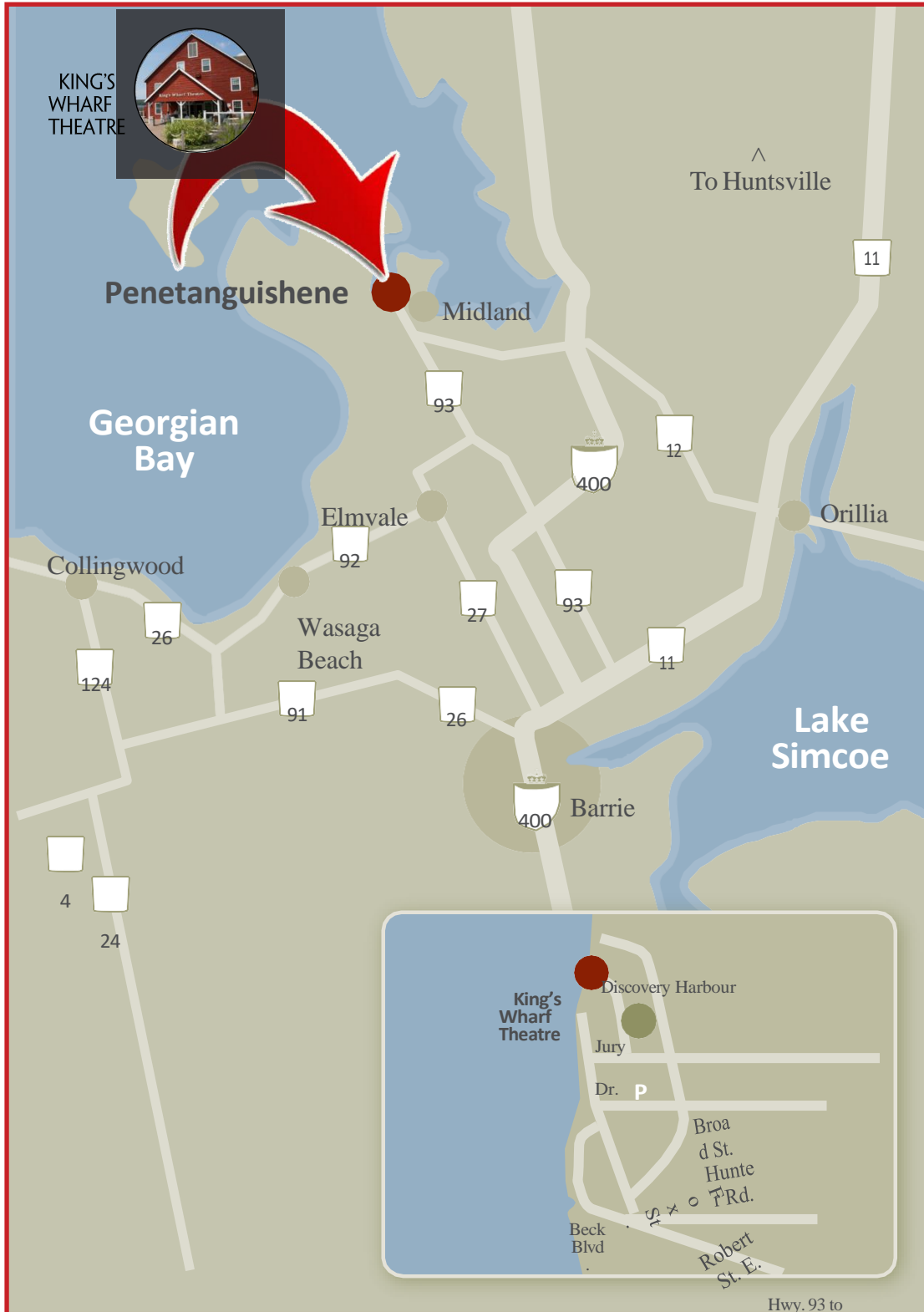
## BOX OFFICE

Box Office service is available to all event producers. The Box Office telephones are staffed Monday through Friday, 9 a.m. to 5 p.m. The Box Office can accept payment via Mastercard, Visa, and American Express over the telephone as payment for tickets. Ticket printing (general admission or reserved seating) includes set-up of the event in our computerized ticketing database. The Box Office is open weekdays from 9 a.m. to 5 p.m. from June through August. The box office will accept cash, cheque, Mastercard, Visa, American Express and Interac as payment for tickets. For events on weekends or holidays, or from September through to May, the box office will open two hours prior to the event start time. The Box Office will prepare a report summarizing all ticket sales, revenues and fees. A URL link can be supplied so that patrons can access the Box Office services online via the producer's website.



# KING'S WHARF THEATRE

## LOCATION



Main St.

Hwy. 93 to Hwy 400

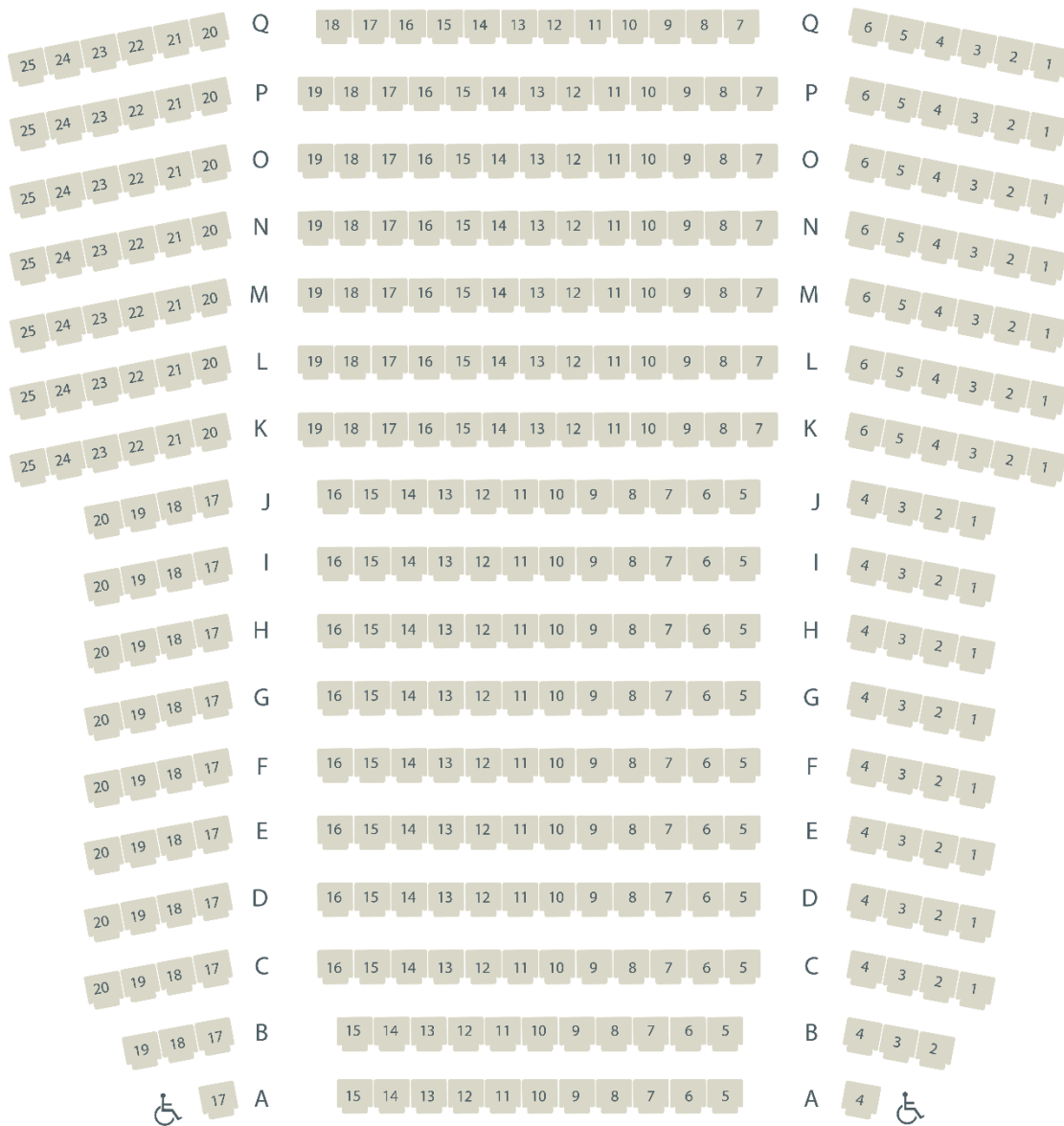
>



## SEATING CHART

### King's Wharf Theatre

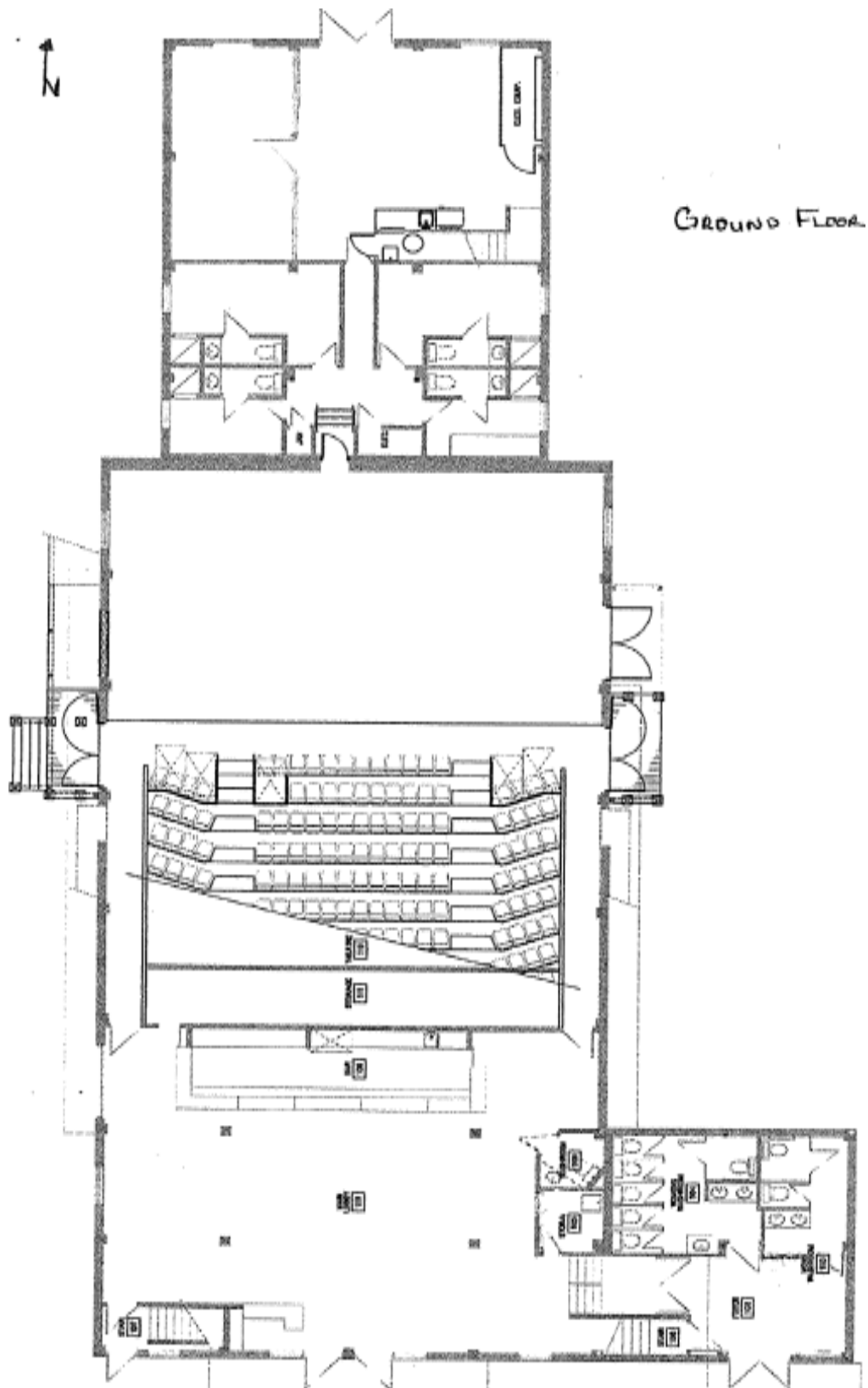
SOUND BOARD



STAGE

# KING'S WHARF THEATRE

## FLOOR PLAN





## RATES INFORMATION

DAILY RENTAL RATES	COMMERCIAL	NON - PROFIT
Single performance (8 hour day)	\$1990.00	\$1275.00
Hourly rate after 8 hours	\$325.00	\$200.00

*Rates do not include mandatory items such as Head Technician, House Manager and Ushers, Ticket Charges and Credit Card Fees. All amounts are subject to HST.*

### PERSONNEL RATES

One Facilities Staff	\$42.50 per hour
	\$65.00 per hour over 8 hours or before 8:00am or after midnight
One Head Technician	\$52.50 per hour
	\$80.00 per hour over 8 hours or before 8:00am or after midnight
One Audio Technician	\$42.50 per hour
	\$65.00 per hour over 8 hours, before 8:00am or after midnight
Front House Manager	\$160.00 per performance (up to 5 hours)
Ushers	\$125.00 flat rate per performance, subject to discretion of LESSOR
Box Office Staff	\$27.50 per hour outside of normal box office hours
Additional staff requirements depend on each event's technical needs and projected attendance.	
Technician(s)*	\$42.50 per hour
	\$65.00 per hour over 8 hours, before 8:00am or after midnight

All staffing decisions are at the discretion of Drayton Entertainment and associated costs will be guaranteed to the theatre by the event producer.

*\*Use of the fly system and/or the house sound mix console requires a Drayton Entertainment technician(s).*

### THEATRE BOX OFFICE SERVICES

A \$1.00 per ticket surcharge will be assessed for all tickets sold or reserved through Drayton Entertainment's Box Office (including complimentary and no charge tickets). Consignment tickets printed at rate of \$0.32/ticket.

### CREDIT CARD/INTERAC SURCHARGE

A 3.5% fee per credit card and interac transaction will be assessed for all credit card and interac purchases. These fees will be accounted for and deducted from the final statement with the theatre.

### CAPITAL IMPROVEMENT FUND (CIF)

A \$1.00 fee per ticket CIF levee will be assessed for all tickets sold or reserved through Drayton Entertainment's Box Office (including complimentary, no charge tickets and consignment tickets) and **included in the ticket price.**

### PAYMENT SCHEDULE

A 50% deposit is required upon signing the rental agreement. The full balance owing is due on the day and prior to the first performance or event.

For space availability, rental estimates, reservations, technical specifications and further information on fees and schedules, please contact:

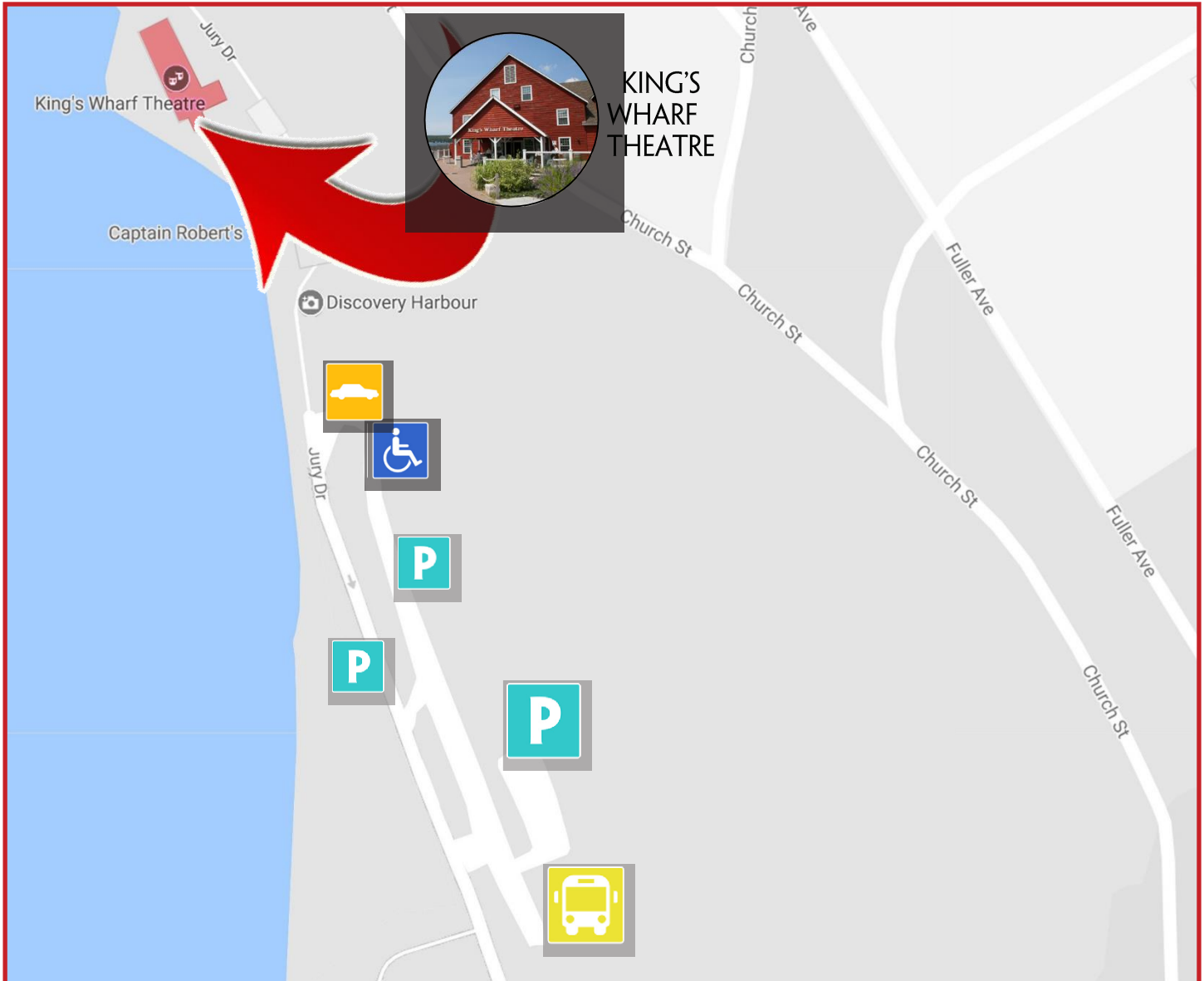
**Karen De Iuliis, Groups, Events and Rentals Manager**

**519-621-5511 ext 246**

**karend@draytonentertainment.com**

# KING'S WHARF THEATRE

## PARKING MAP



### PARKING MAP LEGEND



Bus Parking



Free Theatre Parking



Accessible Parking



Drop off Location  
and Shuttle Location

### KING'S WHARF THEATRE

97 Jury Dr, Penetanguishene, ON, L9M 1G7

Box Office: 705-549-5555

Administration: 705-549-0711

Fax: 705-549-0712